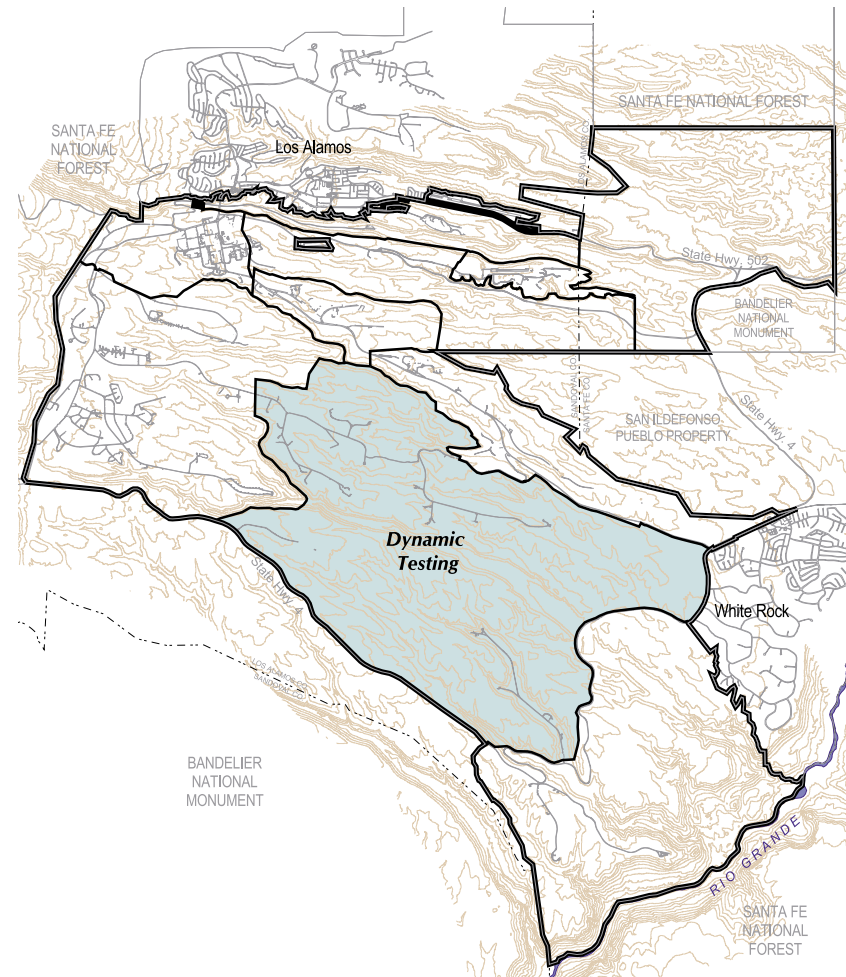


G. Dynamic Testing Planning Area

1. General Description

The Dynamic Testing Planning Area is the largest planning area and covers approximately 12.6 square miles. It is bordered on the north by the Pajarito Corridor East Planning Area. The community of White Rock and the Rio Grande Corridor Planning Area lie to the east. To the south are NM State Highway 4 and Bandelier National Monument. Three mesas, Frijoles, Mesita del Buey, and Mesita del Potrillo sit within the area and are separated by four canyons, Ancho, Fence, Indio, and Potrillo. The primary land use in the Dynamic Testing Planning Area is high explosives testing. The Dynamic Testing Planning Area contains within its boundaries TAs-15, -36, -39, -49, -68 and parts of TA-67.

Map VI-G1: Dynamic Testing Planning Area Key Map



The following assumptions will guide the physical planning of the Dynamic Testing Planning Area for the next 10 years:

- *The Dynamic Testing Planning Area will continue to be crucial in the primary stockpile stewardship work of the Laboratory.*
- *The DARHT and PHERMEX facilities are located here. DARHT is a crucial element in the Advanced Hydrotest Facility.*
- *Nonnuclear testing work will continue in this area.*

2. *Opportunities and Constraints*

The following opportunities and constraints affect physical planning in the Dynamic Testing Planning Area.

Physical Constraints

Thirty-three Native American groups have extensive, archived archeological sites throughout the Dynamic Testing Planning Area, particularly along the canyon bottoms. These are documented ruins requiring that vehicular travel remain on designated roads. There are also federally protected species habitats in the same areas. Several buildings in this planning area are potentially eligible for inclusion on the National Register of Historic Places, and their redevelopment, reuse or demolition must be coordinated with the NM State Historical Preservation Office. Seven hundred-year floodplain systems wind through the planning area. The easternmost of the floodplains has associated wetlands. Development in these environmentally sensitive areas is discouraged.

Operational Constraints

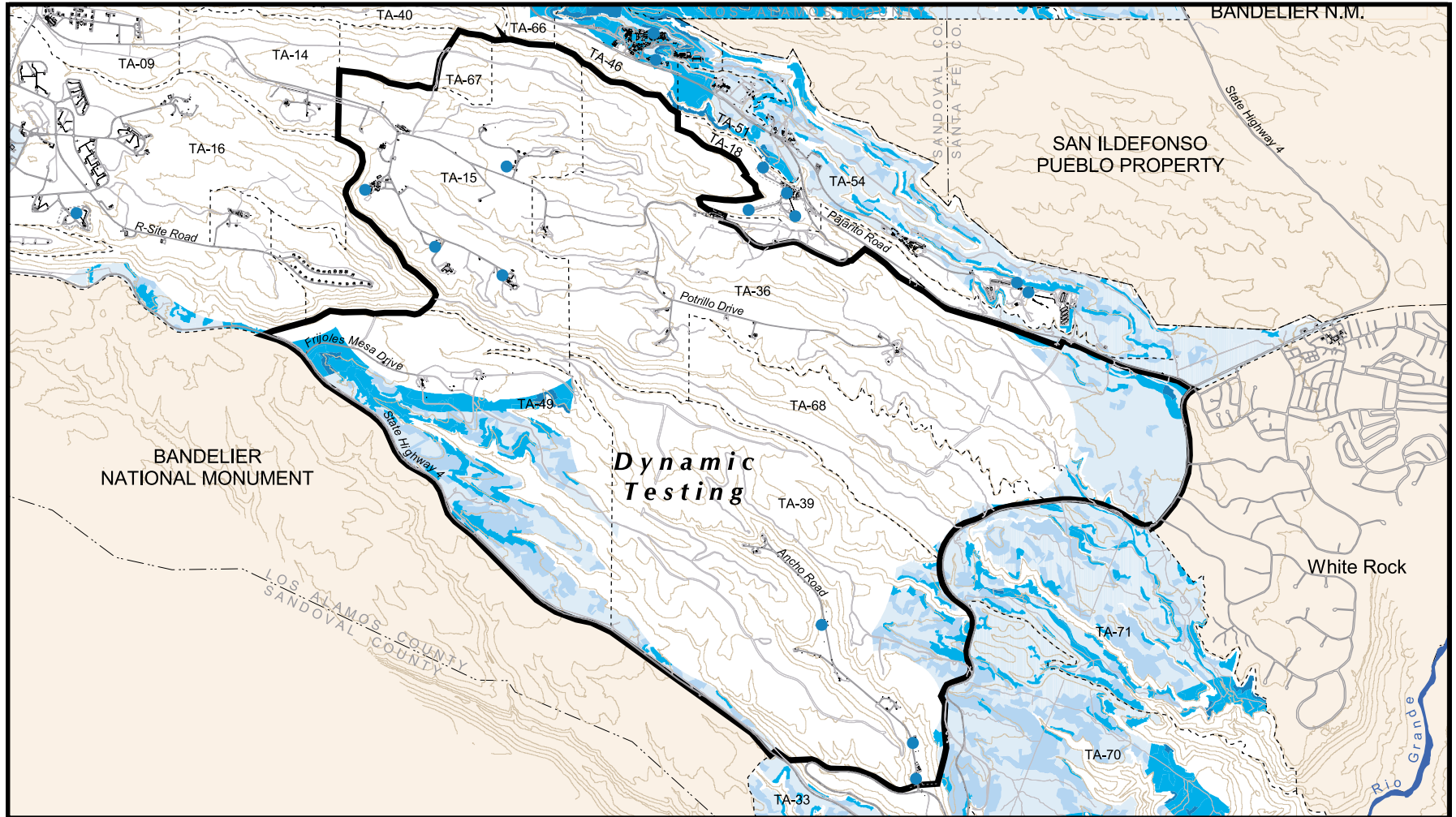
The predominant constraint for the Dynamic Testing Planning Area is the large safety buffer zones required for testing high explosives materials and devices. All radio transmissions are prohibited. Testing in this area requires geographic separation of facilities for safety and buffering. Explosives containment technology may modify the extent of these zones in the future. There are several radiation sources whose radiation safety areas fall within the explosives safety zones. SWMUs located throughout the Dynamic Testing Planning Area contain contaminated materials, projectiles, and shrapnel.

The eastern boundary of this planning area abuts NM State Highway 4 and the community of White Rock. Bandelier National Monument is on the southern boundary. These adjacent areas could pose development restrictions.

Development Opportunities.

Development opportunities in the Dynamic Testing Planning Area are presently limited to high explosives testing functions with one exception. TA-49 is presently used as a training area and has been considered as a location for a Laboratory sanitary landfill to replace the current landfill in the western portion of TA-06. TA-49 could be used for a variety of other purposes provided they do not adversely affect high explosives testing functions. Utilities will have to be extended throughout this area.

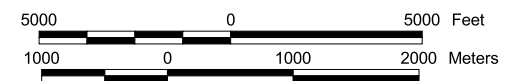
Map VI-G2: Dynamic Testing Planning Area Development Opportunities Map



LEGEND

- Technical Area Boundary
- Non Dept. of Energy Property
- █** Planning Area
- Unique Operational and/or Physical Considerations Exist
- Excellent Development Potential
- Good Development Potential
- Fair Development Potential
- Poor Development Potential
- Radiation Source

Areas of one acre or less are incorporated into the surrounding larger areas.



3. Projects for Dynamic Testing Planning Area

Proposed, planned or budgeted projects noted below and on the facing summary map, VI-G3, for this planning area were identified through Laboratory documents or by stakeholders during the Comprehensive Site Plan 2000 process. The symbol *NS* stands for project “Not Shown” on the summary map.

Development of AHF Capabilities

- ① Planned development of facilities to support the Advanced Hydrotest Facility (AHF) initiative in this area, including the following:
 - Development of DARHT and PHERMEX as part of AHF initiative.
 - Replacement of trailers and transportables with three permanent buildings to consolidate facilities and remove high-maintenance buildings.
 - Potential development of heavy assembly facility in support of DARHT and AHF.

- ② Proposed underground connections related to AHF at TA-53.

Transportation Development

- ③ Proposed upgrade of road from TA-14 to TA-36 to improve access to Pajarito Road.
- ④ Proposed road from TA-36 to TA-68 and -39 to improve north-south circulation between facilities in planning area.
- ⑤ Proposed road from TA-49 to TA-39 to improve east-west circulation.

Infrastructure Revitalization

- NS* Ongoing utility revitalization as noted in Site Wide Planning Area section.
- ⑥ Budgeted project to upsize 2-in. natural gas line to DARHT area.
- ⑦ Planned addition of third 115-kV electrical line to increase site wide electrical redundancy, increase reliability and security.

Facilities Revitalization

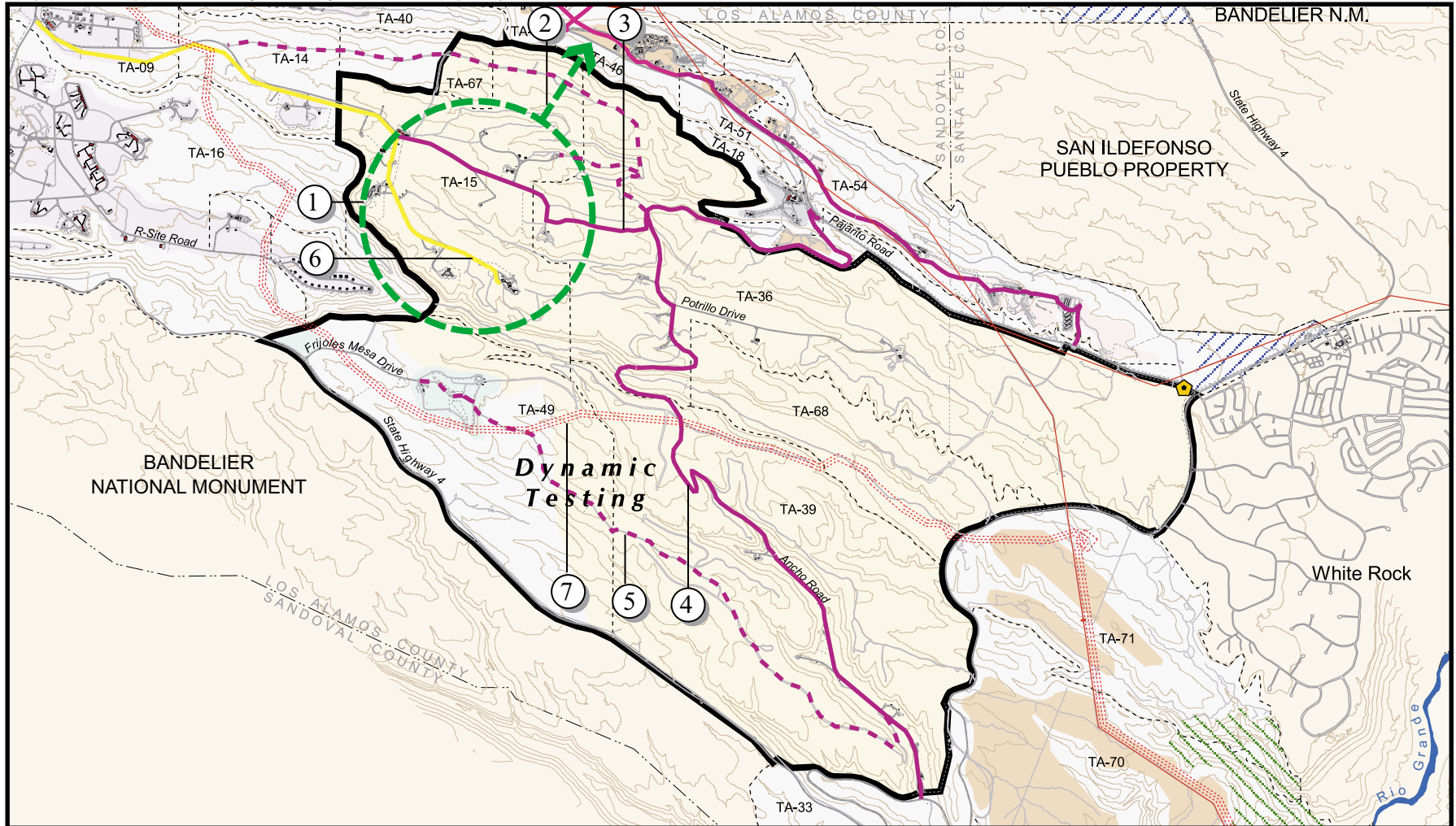
- NS* Proposed replacement, removal or upgrade of poor or failed facilities which compose 35% of facilities in this planning area.

CSP 2000 Issues for Dynamic Testing Planning Area

Important issues that need resolution for continuing refinement of the CSP for this planning area:

- *Identify proposed AHF development to be located within this planning area.*
- *Identify the process for upgrading, removing or replacing poor and failed facilities that make up 35% of the facilities in the planning area.*
- *Evaluate the feasibility and costs, including environmental mitigation, of improving the internal roads within planning area.*

Map VI-G3: Dynamic Testing Planning Area Summary Map



LEGEND

Experimental Science	Reserve	Gas Pipeline	Wildlife Preserve
High Explosives R&D	Waste Management	Long Range New or Improved Roads	North Arrow
High Explosive Testing	Land Transfer Tracts	New or Improved Roads	5000 0 5000 Feet
Non-DOE Property	Planning Area	Proposed Guard Gate	1000 0 1000 2000 Meters
Nuclear Materials R&D	Fair or Poor Buildings	Electric Line 115 kV	
Physical/Technical Support	Area of Interest	Proposed Elec. Line 115 kV	